

MONTHLY MEMBERSHIP PROGRESS REPORT

District 26 M5

Results as of: 4/30/2026

GMT:

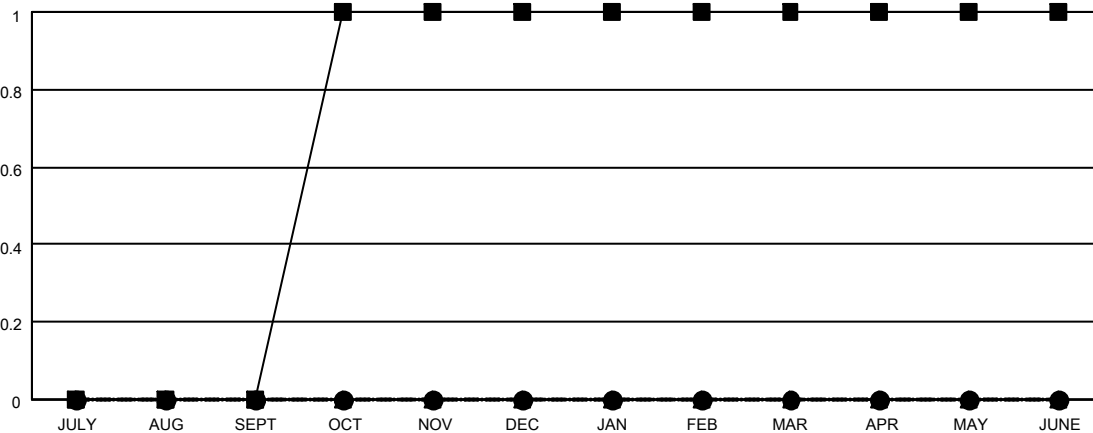
LOCATION MISSOURI

GMT CA

Clubs			
RESULTS FOR 2025-2026			
QUARTER	NEW CLUB GOAL	NEW CLUBS	DROPPED CLUBS
JULY/AUG/SEPT	0	0	0
OCT/NOV/DEC	1	0	1
JAN/FEB/MAR	0	0	0
APR/MAY/JUNE	0	0	0

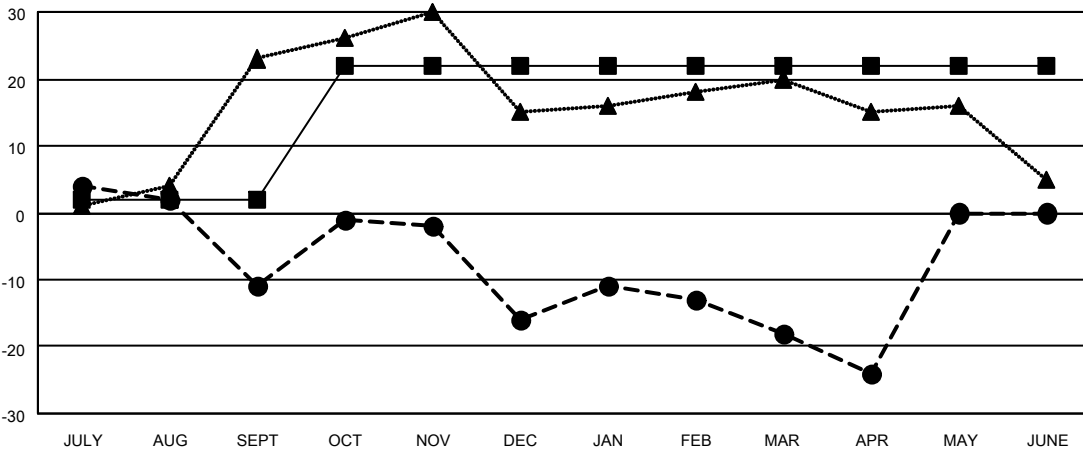
Members			
RESULTS FOR 2025-2026			
QUARTER	MEMBER GROWTH NET GOAL	MEMBER GROWTH ACTUAL	DROPPED MEMBERS ACTUAL (including transfers)
JULY/AUG/SEPT	2	27	37
OCT/NOV/DEC	20	29	32
JAN/FEB/MAR	0	16	15
APR/MAY/JUNE	0	8	14

GOALS AND ACTUAL NEW CLUBS CUMULATIVE



- - CURRENT YEAR GOALS FOR NEW CLUBS
- - CURRENT YEAR ACTUAL NEW CLUBS
- ▲ - LAST YEAR ACTUAL NEW CLUBS

GOALS AND ACTUAL MEMBERS CUMULATIVE



- - MEMBER GROWTH NET GOAL
- - MEMBER GROWTH ACTUAL
- ▲ - LAST YEAR MEMBERSHIP ACTUAL

DROPPED CLUBS: 1	
DROPPED MEMBERS	
DECEASED	9
CLUB CANCELLED	12
OTHER	77
TOTAL	98

20 CLUBS OF 38 ADDED 1 OR MORE NEW MEMBERS

GENDER DISTRIBUTION	
MALE	562 (67.63%)
FEMALE	269 (32.37%)

[CLICK HERE FOR CUMULATIVE MEMBERSHIP DATA](#)

TOTAL FAMILY UNIT MEMBERS	199
FAMILY MEMBERS PAYING HALF DUES	102